

Owner's Manual

English → pp. 1-10

Français → p. 11-19



Hose Magic™

Central Vacuum Hose Management System

Thank you for selecting a HOOVER® product.

This product was inspected and packaged carefully before being shipped from the factory. If you should happen to need assistance during installation or operation, call

1-800-944-9200 for automated referral of authorized service outlet locations (U.S. only) OR

1-330-499-9499 to speak with a representative in our Consumer Response Center OR

Visit us on-line at www.hoover.com to find the service outlet nearest you (click on the "Service" button).

PLEASE DO NOT RETURN THIS PRODUCT TO THE STORE.

For household use only.

Fill in and retain

The HOOVER Hose Magic™ Central Vacuum hose management system will be permanently mounted. For your records, please enter the serial numbers in the spaces provided below and retain in a safe place.

Model No. S5715010 Serial No. _____

Attach your sales receipt to this owner's manual. Verification of purchase date may be required for warranty service.

Index

Important safeguards	2
Grounding instructions	3
Unpacking	3
General Description	4
Features	4
Rough-in kit installation	5-6
Finishing kit installation	7-8
Operating instructions	8
Maintenance/troubleshooting	9
Warranty	10

Important Safeguards!

When using an electrical appliance, always follow basic precautions, including the following:
READ ALL INSTRUCTIONS BEFORE USING THIS APPLIANCE

Warning:

To reduce the risk of fire, electric shock, or injury:

- Do not attempt to permanently install the wiring of your HOOVER Hose Magic™. Consult a qualified electrician to wire your unit with a dedicated ground fault circuit interruptor (GFCI) circuit according to local codes and ordinances, to insure proper grounding. Should the wiring malfunction or break down, grounding provides a path of least resistance for electric current to reduce the risk of electric shock.
- Do not pull hose outdoors or use on wet surfaces. Do not vacuum up water.
- This hose contains electrical wires. Do not vacuum up sharp objects as they could puncture the hose wall and cause physical injury. Do not use the hose if it is damaged, cut or punctured.
- Use only as described in this manual. Use only manufacturer's recommended attachments.
- Do not allow children to use this appliance as a toy. Close attention is necessary when used by or near children.
- Do not use with damaged hose. If appliance is not working as it should, has been dropped, damaged, left outdoors, or dropped into water, take it to a Hoover Sales and Service Center or Authorized Hoover Warranty Service Dealer (Depot).
- Do not close a door on hose, or pull hose around sharp edges or corners. Keep hose away from heated surfaces.
- Do not unplug connections to the retractor unit or handle by pulling on cord. To unplug, grasp the plug, not the cord, to insure pulling it straight out of the receptacle.
- Do not remove electrical cover switch plate at top of the cabinet above the handle.
- Never handle plug or appliance with wet hands.
- Do not put any objects into openings. Do not use with any openings blocked. Keep free of dust, string, hair, and anything that may reduce air flow.
- Do not hold or grab hose when it is being retracted into cabinet opening, as there is a risk of catching hair, fingers, loose clothing or other body parts by the retractor mechanism.
- Always turn off this appliance before connecting or disconnecting either hose or motorized nozzle. Turn off all handle controls and the main breaker before removing the retractor from the retractor cabinet.
- Use extra care when cleaning stairs.
- Do not use to pick up flammable or combustible liquids such as gasoline or fine wood sandings or use in areas where they may be present. Do not pick up anything that is burning or smoking, such as cigarettes, matches or hot ashes.

Save these instructions!



1. Installation

Operate cleaning system only at voltage specified.

This system is intended for household use.

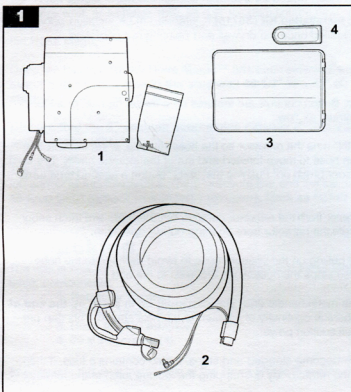
Grounding Instructions

This appliance **must be grounded**. If it should malfunction or breakdown, grounding provides a path of least resistance for electrical current to reduce the risk of electric shock. This appliance is equipped with a cord having an equipment-grounding conductor that is properly installed and grounded in accordance with all local codes and ordinances.

DANGER-

Improper connection of the equipment-grounding conductor can result in the risk of electric shock. Check with a qualified electrician or service person if you are in doubt as to whether the outlet is properly grounded. **Do not modify the plugs provided** in the appliance. This appliance is for use on a nominal 120 volt circuit and has grounding circuitry.

Unpacking of Finish Kit (S5715010)



1. Hose retracting power drive unit (retractor)
2. Electric vacuum hose (45 ft.)
3. Front door cover and frame
4. Hose cavity cover

Tools and supplies needed for installation:

1. Phillips head screwdriver
2. Pledge®* furniture polish and cloth rag

*Pledge is a registered trademark of S.C. Johnson & Son, Inc.

General description

The **HOOVER Hose Magic™** is an in-the-wall Central Vacuum Hose Management and Storage System. The **HOOVER Hose Magic™** is designed normally for new construction housing and consists of **two models: S5715 and S5715010**.

S5715 Rough-In Installation Kit:

1. **Hose retractor cabinet:** 30" L x 12" H x 3.5" D with a 14.5" x 10.5" opening for the hose handle. It is designed to be installed between the studs on 32" centers at approximately 48" above the floor.
2. **Hose storage cavity liner:** thin plastic sheet material that lines the cavity where the hose is stored. The cavity liner provides a clean storage container and protection for the hose.

S5715010 Finishing Kit:

1. **Hose retracting power drive unit (retractor):** designed to easily snap apart to enable positioning the hose to come in contact with the drive mechanism. Once the hose is in place, the retractor will snap back together so it can be positioned properly in the retractor cabinet. The electrical hookups at the back of the retractor are: a 120V AC "power-in" for operating the retractor itself, a 120V AC "power-out" to the hose for operation of the electric floor brush and "low voltage" hook-up for the vacuum system source are all located for easy plug-in to the retractor.
2. **45' electric vacuum hose:** includes a fitting (provided) for connecting the hose to the vacuum source 2" pipe. This fitting is glued directly to the 2" PVC vacuum line entering the retractor cabinet. The hose is loaded into the hose storage cavity liner and then installed into the retractor. With hose installed, the retractor is inserted in the front opening of the retractor cabinet, all plug-ins made and slid to the right and snapped in place.
3. **Front cover door and frame**

After drywall installation and painting are complete, the front cover door may be installed with the door opening to the right. A rubber snout cover is to be used on the handle snout of the **Hose Magic™** when multiple central vacuum hose inlets are connected to the same vacuum source so there will be a vacuum at the next station. To begin cleaning, grasp the handle and push the "out" button, press the "vacuum on" button.

The **HOOVER Hose Magic™** is shipped in two separate cartons. The **Installation Kit (S5715)** is intended to be installed *prior to the completion of drywall* in the home. The **Finishing Kit (S5715010)** is installed once the drywall and painting are complete.

Features

The **HOOVER Hose Magic™** is a compact hose management system. Button controls are features on a swivel handle for all functions on a 45' hose. The hose has an inside diameter of 1.44" for maximum air flow.

Three control buttons are located on the handle. The button labeled "IN" runs the retractor so the hose retracts, or returns into the storage cavity in the wall. The center button, labeled "OUT" allows the hose to move forward and out of the storage cavity. The third button, labeled "VAC" turns the vacuum motor as well as the electric floor brush on. Pushing the "VAC" button a second time turns off both the vacuum motor and the electric floor brush.

The **HOOVER Hose Magic™** requires no tools for removal of the retractor from the retractor cabinet, but there are two latch securing screws that must be removed with a Phillips screwdriver that prevent the retractor from opening during operation.

Torque limiter: This preset control limits the power to the retractor for pulling on the vacuum hose to avoid damage to the hose should it get hung up while retracting back into the wall. The limiter also stops the hose when it comes to the end.

A **rubber cap** is provided for the handle which can be installed over the metal handle end. This cap **must be in place on the end of the unused Hose Magic(s)™** to insure that, in multiple installations, there is continuity of vacuum at the next station. This cap prevents suction loss at the stations "not in use" giving the one "in use" full suction power.

The **HOOVER Hose Magic™** has a reset button should the floor brush become clogged and stops. It also contains a fuse, if the retractor ceases working. These are easily accessible on the back of the retractor by unsnapping the locking latch of the retractor and sliding it to the left.

To replace the fuse, unplug both power cords for access to the fuse. There is one (1) spare fuse inside the fuse holder.

Rough-In Kit Installation - S5715

Tools and supplies needed for installation:

1. Phillips head screwdriver
2. Pocket knife
3. Pledge® furniture polish and rag
4. PVC glue
5. Crimp pliers
6. Staple gun with 3/8" staples
7. Flashlight

These supplies are furnished for installation:

1. (4) #6 x 1" flat head screws to install the rough-in box in place
2. (2) insulated male slip connectors for Class II low voltage connections

*Pledge is a registered trademark of S.C. Johnson & Son, Inc.

The HOOVER Hose Magic™ is provided with a 45' hose. The location for installation should be where the maximum coverage in the home is possible, typically near the center of the house. This can be achieved by using a 50' measuring tape or a pre-measured 50' cord.

The Hose Magic™ should not be installed on a load bearing wall, fire wall, or exterior wall, as a 2" vacuum source pipe, 120V AC power and a low voltage line will be run from their locations to the Hose Magic™.

Once the location for the Hose Magic™ has been selected, construct a free space area in the stud wall 30-1/2" W x 43" H, starting 5" above the floor.

Be sure that the 2" vacuum source pipe extends 8" into the cavity space. (Fig. 1)

The PVC pipe and the low voltage lines enter in the upper right hand corner. Facing the cavity, the 120V AC line enters the upper left corner of this free space. The 2" vacuum line and the low voltage lines run to the vacuum source and the 120V AC line runs to a 15 Amp GFCI (ground fault circuit interrupter). **Mark as "GFCI HOOVER Hose Magic™" Do not connect at this time.**

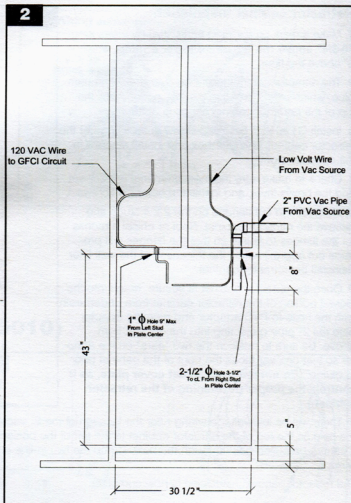
Unpacking

The wall is now ready for installation of the HOOVER Hose Magic™. The Hose Magic™ installation kit (S5715) consists of 2 major components:

1. Retractor cabinet
2. Storage cavity liner(s)
3. Hose to PVC adapter
4. #6 x 1" screws (4)

To complete this final installation of the Hose Magic™ requires **Finishing Kit (S5715010)**.

Save the cardboard insert in the face of the retractor cabinet. It is to be replaced following the installation as a protective dust cover until the finishing kit is installed.

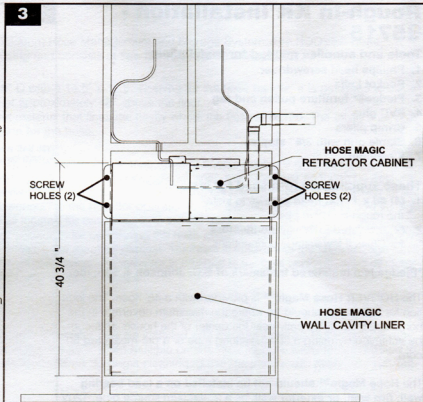


Retractor cabinet installation:

1. Make a mark on the right hand stud by measuring **40-3/4" above the top of the lower purling**, which is 5" above the floor.
2. The retractor cabinet is slid up over the 2" vacuum pipe, which extends 8" into the free space, until the top of the retractor cabinet flange is at the mark.
3. Install (1) #6 x 1" flat head screw in the flange of the retractor cabinet, level the box and install a screw in the opposite side.
4. Check to make sure the measurements are correct and the box is level, and install the other (3) screws.
5. Mark around the flanges on the 2 x 4 studs and remove the retractor cabinet. Rout or chisel a recess for the flanges to fit into so that the flanges will protrude out approximately the thickness of the wall liner. Reinstall the retractor cabinet.
6. Once the retractor cabinet is secure, reach into the closed portion of the retractor cabinet from underneath with the hose-to-PVC adaptor and glue the adaptor onto the 2" pipe projecting into the cabinet from above. Be sure to position the two "ears" on the adaptor so that one ear faces the front of the cabinet prior to gluing. **(Do not remove cabinet cover plate, as it controls the proper positioning of the retractor cabinet.)**

7. There will be low-voltage wiring near the location of the 2" vacuum pipe. Pull approximately 18" of these two small wires through the hole on the top of the retractor cabinet to the left of the position where the pipe enters the retractor. Tie a knot in the wire so that it cannot be pulled back through the hole. Crimp the two in-line crimp slip connectors (which are provided) onto the low voltage wires.

The retractor cabinet installation is now complete.



Storage cavity liner installation:

1. Place the 3.5" x 32" sections over the two studs and bottom purling, covering the 2 x 4s. Staple in place using a staple every 5" along the outer edge of the stud and purling. **Note: The channels may need to be trimmed to length. You may have to tap the staples flush with a hammer.**

2. Slip the wall liner up over the out face on the bottom of the retractor cabinet and staple in place to the studs and purling. The liners must enclose the entire wall cavity below retractor cabinet.

3. **The storage liner must receive a liberal coating of Pledge® furniture polish** before it is placed over the cavity opening. This should be applied to all the smooth inside surfaces and sprayed liberally on the liner.

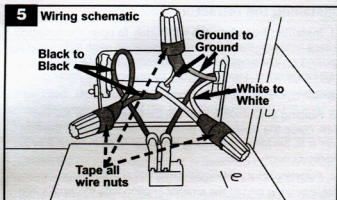
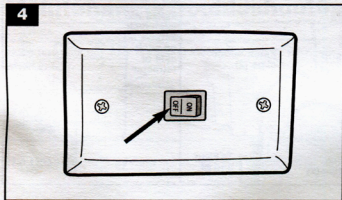
Replace the cardboard insert in the face of the retractor cabinet to prevent dust and debris from entering cabinet during drywall and painting finishing.

The liner installation is now complete.

Electrical wiring installation:

This appliance is designed to be permanently wired (hardwired), and includes 7' of Romex connecting wire. Consult a qualified electrician or an electrical contractor for wiring the Hose Magic™ to a GFCI (ground fault circuit interruptor) 15 Amp circuit breaker.

The rough-in is now complete. The unit is ready for the **Finish Kit (S5715010)**, which provides the hose, retractor and the front door cover. This is to be installed after the drywall and painting are complete.



Finishing Kit Installation (S5715010)

The **Finishing Kit** carton contains these components:

1. **Hose retracting power drive unit (retractor)**
2. **Electric vacuum hose (45 ft.)**
3. **Front door cover and frame**

Note: The door and door frame are fragile and should be removed carefully. Also, the hose retractor is heavy, but contains a very fragile circuit board, so extreme care must be taken so that it is not dropped or bumped during the Finishing Kit installation process.

Installing the Hose Assembly

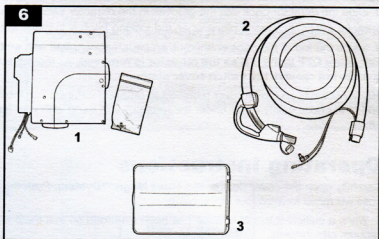
1. With the hose coiled on the floor in front of the retractor cabinet, **turn the hose over so that the handle grip is on the bottom** and carefully clip the plastic ties so the hose is free.

2. Remove the cardboard protective dust cover from the retractor cabinet. (This cover has a label on it saying, "This is a protective dust cover".) Discard dust cover. Using a flashlight, inspect the interior of the retractor cabinet. Note the position of the hose-to-PVC pipe adaptor. This is the receptacle for supplying vacuum to the system.

3. **Inserting and locking the hose:** Grasp the hose end opposite the handle grip with your **left** hand. Put your left hand with the hose into the cavity and insert hose end over the hose-to-PVC adaptor protruding into the retractor cabinet at the far side. **Note:** Be sure that the wires and locking clip are facing the center of the cabinet, for ease of wiring connections.

4. Slide the hose clip firmly upwards until you feel or hear the clip lock in place. Tug gently downward to assure that the clip is locked. The hose is now firmly in place.

5. Lift the hose gently from the clip end and insert into the cavity below the retractor cabinet, leaving about 6' of hose outside. (Leave enough hose so that the handle rests on the floor in front of the retractor cabinet.)



Installing the door frame and door:

1. The door can be removed from the frame by closing the door over your fingers to unsnap the door from the frame. Place the frame over the handle and hose and align the frame with the retractor cabinet with the hinge pins to your right.

2. Holding two screws (eight screws total are provided in the plastic bag, taped to the door) line up the frame and insert the two upper screws and turn several turns. **Do not tighten at this point**, but be sure the frame is secure enough so it won't fall.

3. **Place the remaining screws in the frame and tighten all eight screws** so the frame is secure. Snap the door to the frame so that the door swings freely and snaps into the closed position. If it does not snap shut, the two left hand screws are too tight and need to be loosened.

Note: If required, the frame and door can be attached to the retractor cabinet so the door will hinge on the left side. The HOOVER medallion can be carefully removed and repositioned.

Continued →

Installing the retractor

1 **Installing hose into the retractor:** To open the retractor, press firmly on the **latch button clips** on each side while pulling on the small section of the retractor. The retractor will hinge open once the latch button clips are pushed.

2. Remove the smaller section of the retractor.

3. Holding the retractor with the **locking latch** at the top left, place the hose in the gear mechanism so that the handle is to the left and the long length of hose in the cavity is to the bottom.

4. Push the hose hard against the large side of the retractor, insert the end of the smaller section with the hooks into the bottom right of the larger part of the retractor.

5. Push firmly against the hose until the buttons clip in place. You may need to pull slightly on the hose to engage the gears. Install the latch lock screws (supplied in small polybag attached to retractor). The hose is now inserted into the retractor.

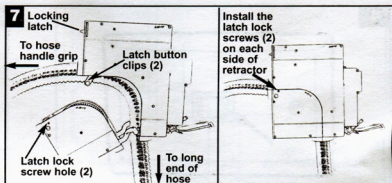
6. **Installing the retractor into the retractor cabinet:** Place the retractor in the open space, locking latch up, with the hose inserted into the cavity space. Place retractor in the retractor cabinet. Reach into the cavity and secure the two 120V leads and plug them into the back of the retractor. (To reduce the risk of electric shock, this appliance has a polarized plug [blades are different from one another]. This plug will fit in the polarized outlet only one way.)

7. Connect the low-voltage wires (4 pairs of wires). Two come from the hose area and two from the retractor. The white plugs connect only one way; the others connect either way.

8. Slide the retractor back into the grooves in the retractor cabinet, **making sure the electrical cords are inside the cavity.** The retractor will firmly snap in place when the locking latch is in place at the top of the retractor cabinet.

9. Inside the top of the cabinet, there is a switch cover plate with an **OFF/ON switch**. This is located so that it will automatically turn power **OFF** to the unit **as the retractor is removed**. As the **retractor slides into the cabinet**, the switch moves to the **ON** position. **Do not remove the switch cover plate.**

10. Insert the hose cavity cover (chained to retractor cabinet) into the retractor cabinet. With your finger in the hole, place the square end of the hose cavity cover under the retractor and bend with your finger to latch in the cabinet. Assure that it does not fall into the cavity.



Operating Instructions

Carefully open the cover door on the **Hose Magic™ System**. Push the center button (marked "OUT") on the handle grip and the hose will move forward, out of the cavity.

1. When a sufficient length of hose has been extended so that there is room to vacuum, remove the rubber cap and connect the vacuum attachments.

2. If you are using an approved power nozzle attachment, attach it securely to the extension wand(s) and connect the two prong connector in the receptacle below the handle. If you are using other attachments, be sure they are securely attached to the handle grip.

3. To start the vacuum system, push the button marked "VAC". If attached, the power nozzle will activate as well.

4. While using the system, you will be able to extend or retract the hose when necessary. When vacuuming is finished, stop the vacuum by pushing the "VAC" button. Retract the hose by pushing the "IN" button. The hose will retract into the wall cavity.

5. Place the rubber cap on the end of the nozzle to allow vacuum at other central vacuum hose inlets (if installed).

HOSE MAGIC™ CENTRAL VACUUM HOSE MANAGEMENT SYSTEM - ACCESSORY KIT (S)

To use your new **Hose Magic™ Management System** with power nozzle and attachments, you will need the **Hose Magic™ Management System Accessory Kit Model S5716**.

Maintenance/Troubleshooting

PROBLEM	SOLUTION
Hose has difficulty fully retracting into wall, or stops intermittently when in use.	With hose extended out completely, spray Pledge® Furniture Polish liberally in cavity where hose is stored and a mist on the hose. It is essential that only Pledge® brand furniture polish be used. Use of any lubricants other than Pledge® can cause decomposition of the hose covering and will void the warranty.
The Hose Magic™ System is installed and doesn't work.	<ol style="list-style-type: none"> 1. Check the GFCI circuit breaker is switched on in the house electrical panel marked HOOVER Hose Magic™ System. 2. Be sure the power cords are plugged into the back of the retractor and that the switch in the top of the retractor cabinet is ON once the retractor is replaced. 3. All controls for the unit are in the handle; be sure to fully depress each button control.
Power nozzle doesn't work.	Remove hose cavity cover, unclip retractor, pull out (to the left) and push reset button on the back of the retractor as marked.
Retractor doesn't work.	Remove hose cavity cover, unclip retractor, pull out (to the left) and check fuse located in the inlet receptacle. If spent, replace fuse with spare fuse in holder.
You have problems other than those listed.	Contact the Hoover Consumer Response Center, phone 1-330-499-9499. In Canada, contact Hoover Canada, phone 1-800-263-6376.

Maintenance Records

Keeping accurate records will avoid invalidation of the warranty.

Item	Maintenance Task	Date of Service
Hose maintenance	Clean Hose; Spray Pledge® into Hose Cavity Liner	/ /
Hose maintenance	Clean Hose; Spray Pledge® into Hose Cavity Liner	/ /
Hose maintenance	Clean Hose; Spray Pledge® into Hose Cavity Liner	/ /
Hose maintenance	Clean Hose; Spray Pledge® into Hose Cavity Liner	/ /
Hose maintenance	Clean Hose; Spray Pledge® into Hose Cavity Liner	/ /
Hose maintenance	Clean Hose; Spray Pledge® into Hose Cavity Liner	/ /
Hose maintenance	Clean Hose; Spray Pledge® into Hose Cavity Liner	/ /

LIMITED LIFETIME WARRANTY

The **HOOVER Hose Magic™ System** is warranted to be free from defects in workmanship and material under normal household use for a period of five years from the date of purchase. This warranty does not cover scratched or abused parts.

If difficulty develops with the product you should contact the nearest **HOOVER Hose Magic™ System** distributor. If returning the unit is necessary, you are responsible for payment of shipping charges. These shipping charges should be prepaid.

The product will be repaired and/or any defective parts replaced without charge within a reasonable time after receipt of the product. The product will be returned to you, prepaid.

This warranty is void if the unit is not installed in accordance with the installation instructions provided. Keep accurate maintenance records to avoid invalidation of warranty.

The foregoing warranties are exclusive and in lieu of all other warranties, expressed or implied, including the implied warranties of merchantability and fitness for a particular purpose. The Hoover Company **disclaims any responsibility for incidental or consequential damages** other than as expressly provided herein.

If further assistance is needed, or if there are questions concerning this warranty or the availability of warranty service outlets, contact the Hoover Consumer Response Center, phone 1-330-499-9499.

In Canada, contact Hoover Canada, Burlington, Ontario L7R 4A8, 1-800-263-6376.